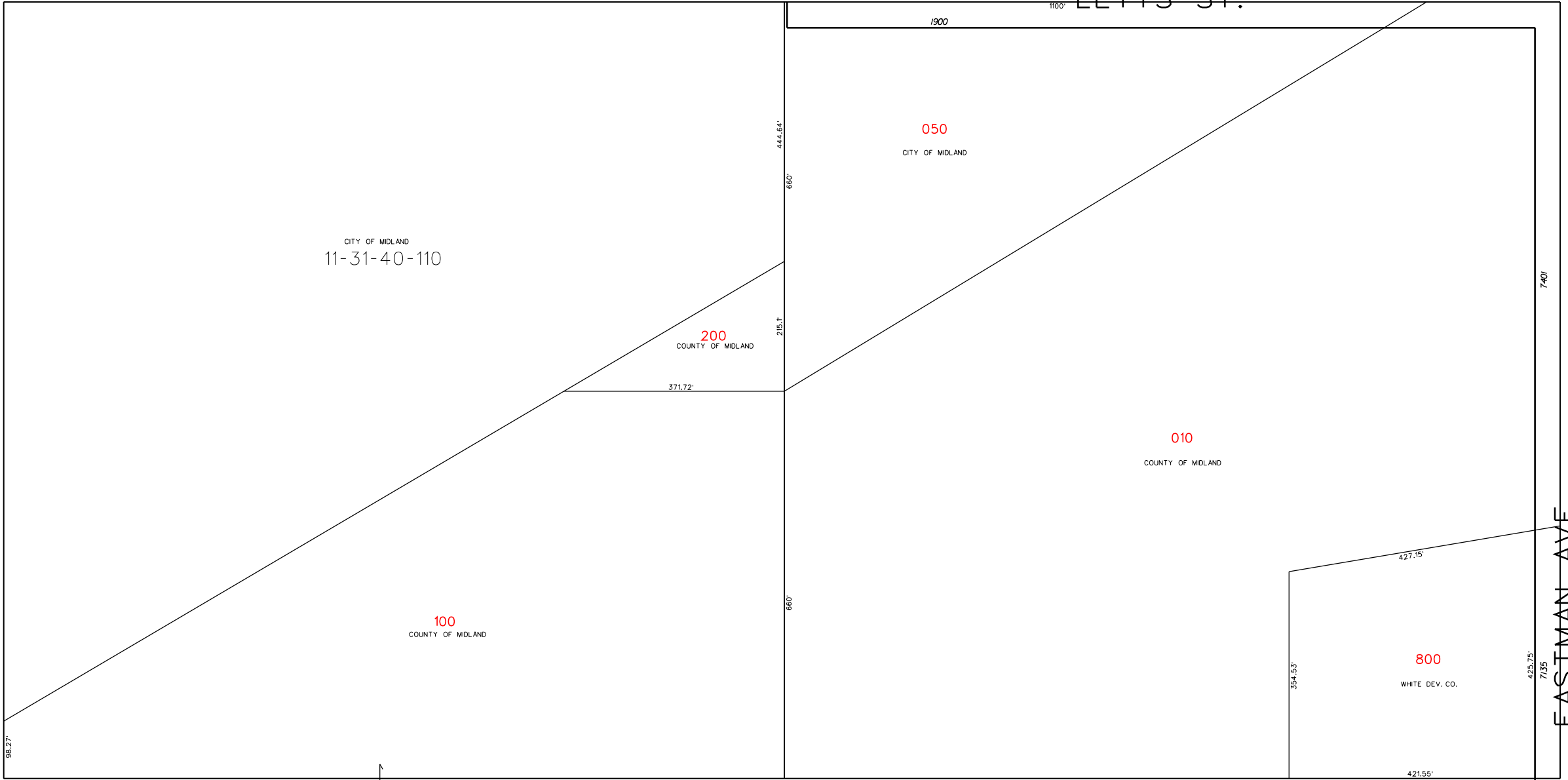


11-32-10
N 1/8 LN

LETTS ST.

11-32-70
N-S 1/4 LN



CITY OF MIDLAND
11-31-40-110

050
CITY OF MIDLAND

200
COUNTY OF MIDLAND

010
COUNTY OF MIDLAND

100
COUNTY OF MIDLAND

800
WHITE DEV. CO.

E-W 1/4 LN
11-32-30

EASTMAN AVE.
E SEC LN
11-33-70

S 1/2 OF NE 1/4