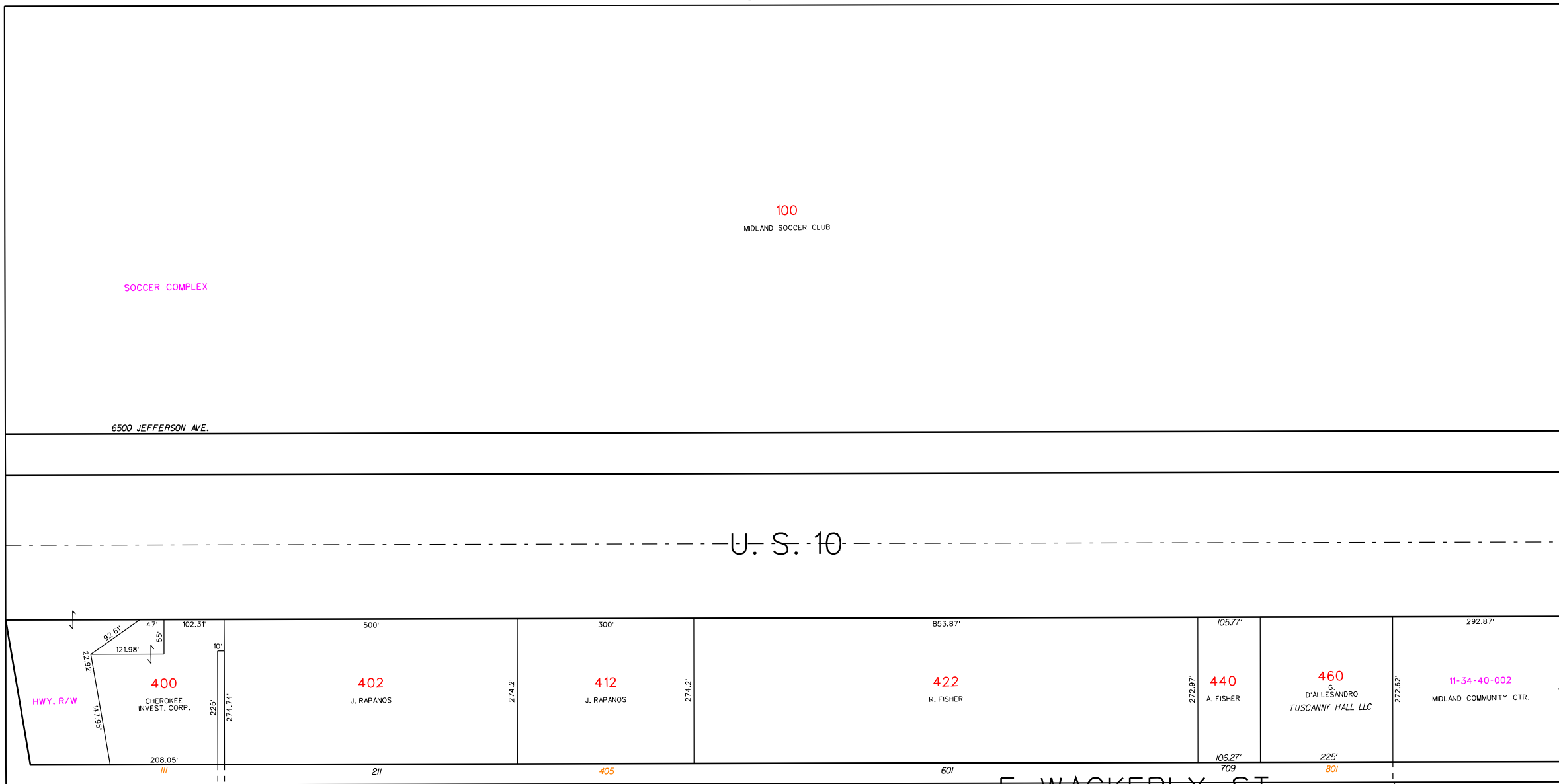


11-34-60  
S 1/8 LN

11-33-40  
W SEC LN

N-S 1/4 LN  
11-34-40



SOCCER COMPLEX

100  
MIDLAND SOCCER CLUB

6500 JEFFERSON AVE.

U. S. 10

HWY. R/W

400  
CHEROKEE INVEST. CORP.

402  
J. RAPANOS

412  
J. RAPANOS

422  
R. FISHER

440  
A. FISHER

460  
D'ALLESANDRO  
TUSCANNY HALL LLC

11-34-40-002  
MIDLAND COMMUNITY CTR.

PERMANENT ESMT. & R.O.W.  
FOR STORM SEWER TO CITY

S SEC LN  
14-03-80

E. WACKERLY ST.

S 1/2 OF SW 1/4

FILE: F:\CAD\FILES\Assessor's Maps\ARKIN\_SECTION\11-34-50.DGN  
DATE: 27-Feb-03 09:53