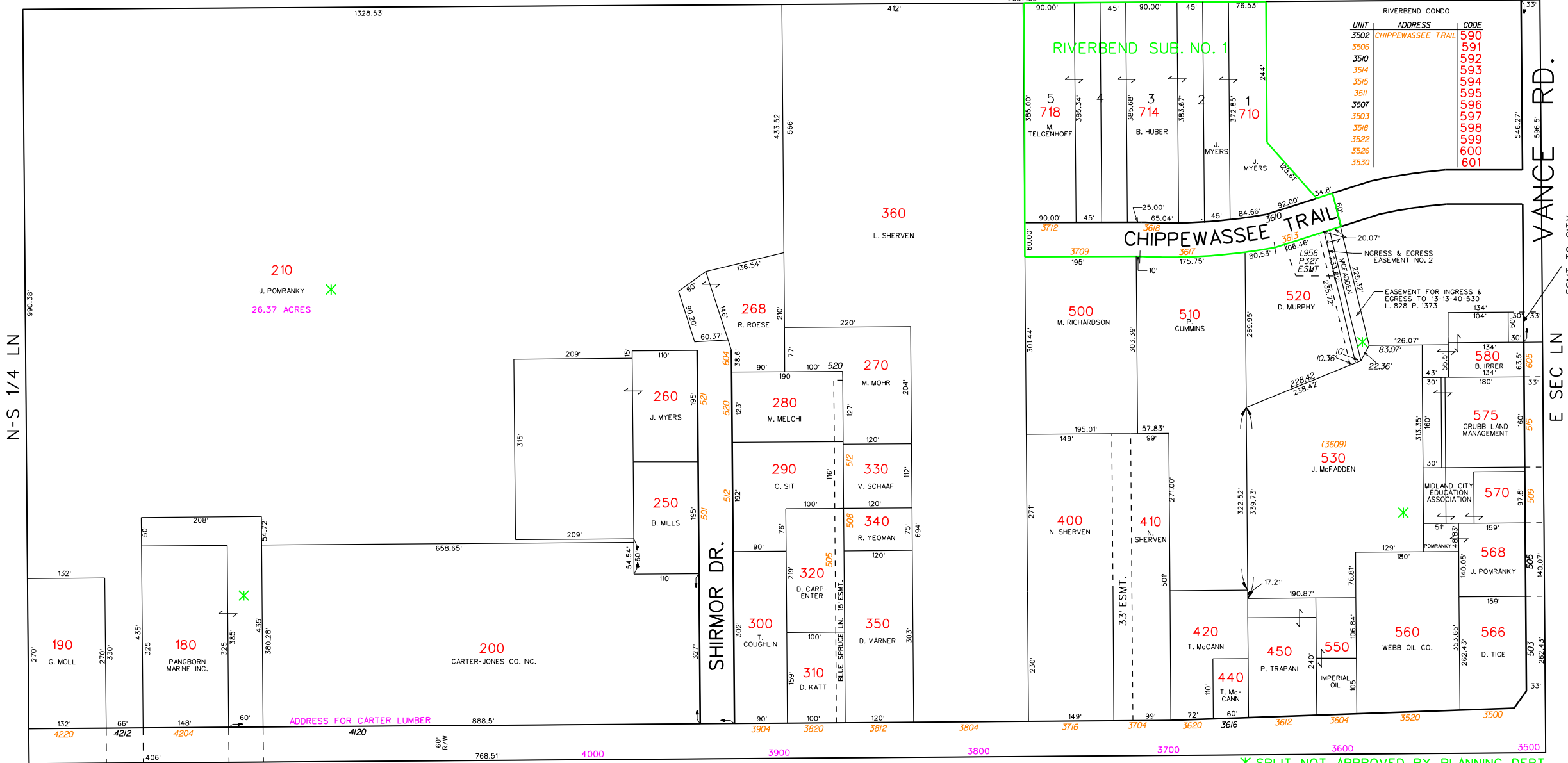


OUTSIDE CITY LIMITS
S 1/8 LN



210
J. POMRANKY *
26.37 ACRES

* SPLIT NOT APPROVED BY PLANNING DEPT.

M-20

S SEC LN
13-24-10

S 1/2 OF SE 1/4

FILE: F:\CAD\FILES\Assessors Maps\HOMER SECTIONS\13-13-40.DGN
DATE: 15-Apr-03 09:48

N-S 1/4 LN

VANCE RD.
E SEC LN
14-18-96

ESMT. TO CITY
FOR SANITARY SEWER
PUMPING STATION
2'-2'-90
30'x50'