

At Your Service



A Newsletter for the Citizens of Midland, Michigan

August 2009

Curbside Collection Changes Recycling

The City of Midland will begin once-a-month curbside collection of recyclables the week of August 31. Monthly pick-up will replace the current bi-monthly collection process.



The change, approved by City Council in April 2009, is needed to offset rising costs for curbside pickup and recent City budget challenges.

Midland residents' monthly recycling day will continue to coincide with their refuse collection day. Individual monthly recycling dates through June 30, 2010, are included on a postcard that was mailed to Midland households in mid-August. Residents are encouraged to keep the postcard and post it to their refrigerator as a reminder of their new recycling dates through June 2010.

Residents who did not receive their postcard by Friday, August 21, may contact the Department of Public Services (DPS) at 837-6900 for a list of their recycling collection dates for the next 10 months. This information

will also be available on the City of Midland website (www.midland-mi.org) by the end of August (see inset below).

Recyclables should be placed at the curb by 7:30 a.m. on collection day. Acceptable items include select paper, cans, glass, and plastics. A list of items collected through the curbside recycling program can be found on the City's website.

Residents who miss their monthly collection day may take recyclables directly to Midland Volunteers for Recycling, 4305 E. Ashman St. (at the entrance to the Sanitary Landfill).

Also new this summer, additional recycling bins are available for \$6 each at the Municipal Service Center, 4811 N. Saginaw Rd. Free bin delivery is available as long as bins are paid for in advance. To order more bins, mail your check or money order to the following address: City of Midland, P.O. Box 1647, Midland, MI 48641-1647.

Heavy Items

Hheavy item collection within the city has returned to the residential program it was originally designed to be. As of July 17, heavy item collection for businesses in Midland ended, including collection of furniture, large moving boxes, appliances, demolition materials, and brush.

No changes are planned for residential heavy item collection.

For more information, call DPS at 837-6900.

Collection Info at Your Fingertips

Do you have a hard time remembering your City of Midland refuse, recycling, or heavy item collection days? We have just the service for you!

On August 28, the City will launch a new online interactive feature through which you can look up your next refuse, recycling, and heavy item collection day in a few easy steps. Check out the **Refuse / Recycling / Heavy Item** area on the City website's home page (www.midland-mi.org). In the space provided, type in your Midland address, and the dates for your next refuse, recycling, and heavy item collection will appear in the appropriate shaded form fields.

Visit our site to try out this new service. We think you'll like it!

GIS Bringing More Information to Citizens

Recent enhancements to one of the City’s online resources are making it easier than ever to access information about Midland properties and our community’s many amenities.

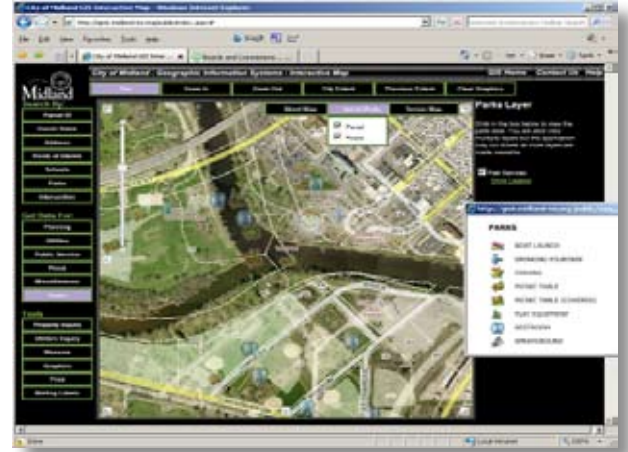
The City’s geographic information system (GIS) brings information to life by making it visual: data – such as the location of parks – is layered over an aerial photo of Midland. With GIS, users can view relationships, processes, patterns, and trends in the form of maps, reports, and charts.

Aerial photography, road information and addresses, plus parcel, elevation, and planimetric data make up the system’s base. Over the last three years, more layers have been added to meet the needs of various City departments including Utilities, Public Safety, Planning, Public Works, and Parks & Recreation. The site is now more functional, provides more information and easier access to it, and has an expanded map that includes all of Midland County.

City staff use the system regularly, saving on the time and effort it takes to gather key data through multiple sources. Now much of this same information is being made available to the public.

The system is easy to use: simply visit www.midland-mi.org/gis, select “Accept terms & view enhanced map,” and choose from a variety of tools to locate details about Midland. Here are just a few of the possibilities:

- Find building information and floodplain status for a particular address.
- Determine how close your home is to the nearest fire hydrant.
- Access zoning and land use information for undeveloped properties.
- Find tax assessment reports and tax billing histories for individual properties.
- Find the location of picnic shelters, outdoor grills, and other amenities at Midland parks (see graphic at right).



These many enhancements helped the City garner a special achievement award from GIS software developer ESRI Inc. The City was selected from among 300,000+ organizations worldwide for its vision, leadership, and innovative use of GIS technology.

Call the Information Services Department at 837-3364 with your GIS questions.

SUMMER'S END BASH
Party on the 19th Hole

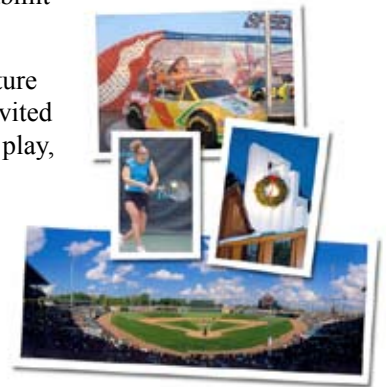
Come to the Currie Golf Course West Clubhouse on **Friday, August 28, 7-11 p.m.** for an end-of-summer bash. There will be live music featuring local band Shoobooty plus drink and food specials, and discounts on golf. Admission is free.

Come after a round of golf, or just for the party. Visit www.curriegolf.com, or call 839-9600 for details. Hope to see you there!

“SAY CHEESE!” Photo Contest Begins

It’s time once again to gather your photos of Midland and submit them in the City’s annual Photo Contest.

Artwork for the 2010 City Calendar/Services Guide will feature photos of the city of Midland. Amateur photographers are invited to submit color photos of Midland events, people at work or play, scenic or historic places around town, or just your favorite snapshot of life in the city. The deadline is **5 p.m., Friday, September 25** to submit up to four (4) photos in the contest. Photos will be selected based on originality, creativity, and reproduction quality. Photo entry forms are available online at www.midland-mi.org or at City Hall and the Grace A. Dow Memorial Library. Call 837-3307 with any questions.



At Your Service

is produced by the City Manager’s Office
333 W. Ellsworth, Midland, MI 48640
Libby Richart, Editor • 837-3307
www.midland-mi.org

Midland City Council
Tom Adams, Ward 1/Mayor Pro Tem
Maureen Donker, Ward 2
Hollis McKeag, Ward 3
Bruce Johnson, Ward 4/Mayor
Joe Rokosz, Ward 5

ECRWSS
POSTAL CUSTOMER

PRSR STD
U.S. Postage
Paid
Midland, MI
Permit 5